

www.asiaprefabrik.com.tr



+90553 752 11 58

NEW GENERATION MODULAR CONSTRUCTION SOLUTIONS



FACTORY



WE EXPORT TO
49 COUNTRIES



TURKEY
KEMALPAŞA OSB / İZMİR

48.000 M² OPERATING AREA



Move
Down

ROBOTIC WELDING TECHNOLOGY



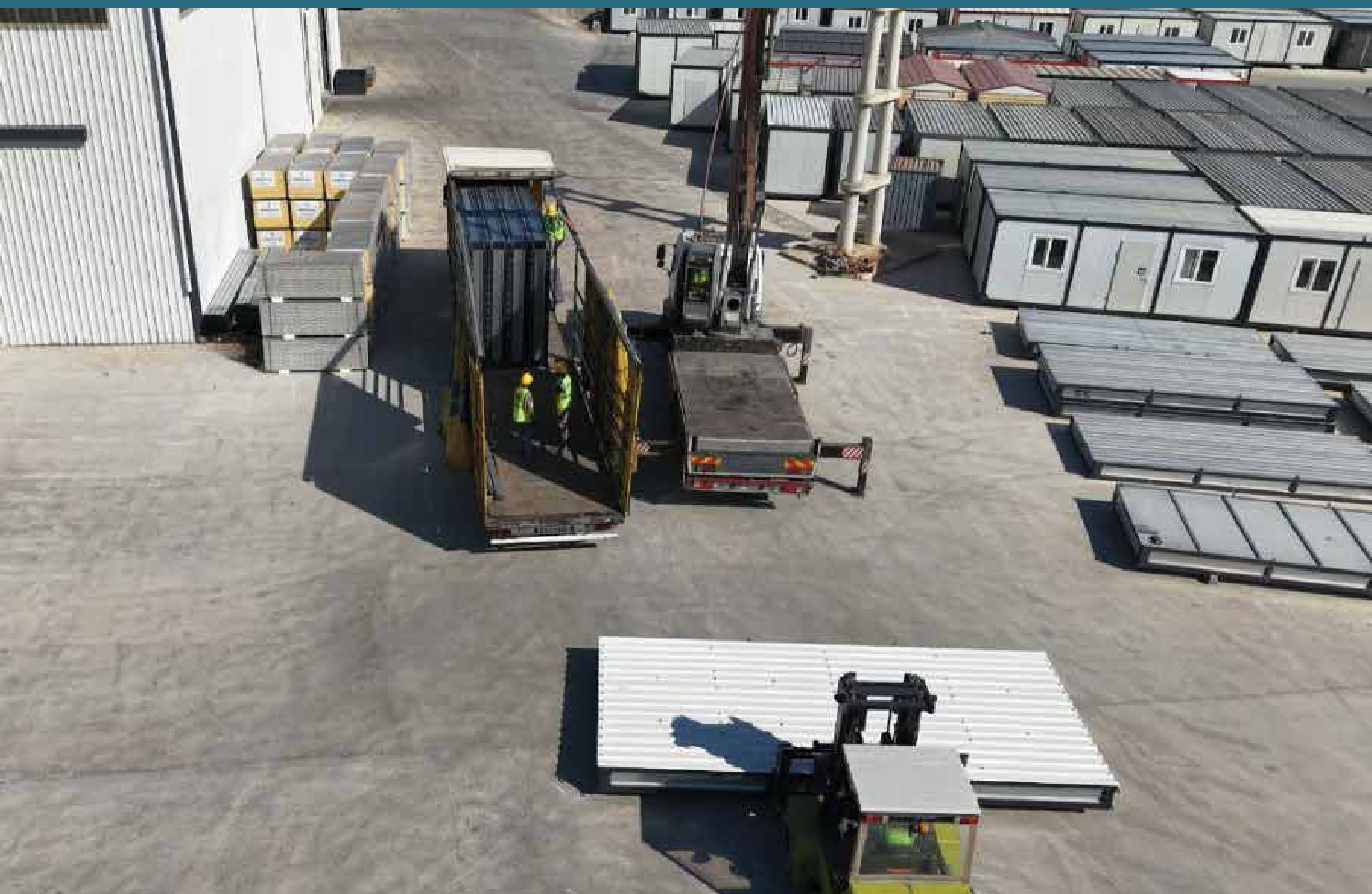
HIGH-TECH PRODUCTION



STRONG CHASSIS



15.000 M² ENCLOSED AREA



LOADING AREA



PRODUCTION AREA



STORAGE AREA



ASIA PREFABRİK A.Ş

ABOUT US

Founded in 2007, Asia Prefabrik has established itself as a trusted brand in national and international markets by providing modern and innovative solutions in the field of modular building technologies.

Our journey began in Izmir on a production area of 40,000 m² and quickly expanded to the Middle East, where we successfully completed numerous prestigious projects in the United Arab Emirates, Iraq, Saudi Arabia, Oman, Qatar, Morocco, and Algeria. In 2016, we strengthened our presence in the European market by opening our second production facility in Kozarska Dubica, Bosnia and Herzegovina, on an area of 30,000 m² under the brand “FERMENDI”.

Today, we operate our new production center on a total area of 48,000 m², including 15,000 m² of covered space, and export to more than 49 countries worldwide. In Europe and the Balkans, we are proud to have successfully completed projects for international institutions such as the United Nations, UNICEF, and NATO.

Our solutions cover a wide range, from worker camps and social housing projects to large residential complexes, community facilities, commercial buildings, and custom-designed projects.

The foundation of our success lies in our production approach based on international standards, our investments in cutting-edge technology, and our strong, development-oriented team.

Asia Prefabrik continues to grow globally, driven by its core values of quality, trust, and sustainability.



20.000 UNITS ANNUAL PRODUCTION CAPACITY

FLATPACK CONTAINER

Flat-pack containers offer economical and practical solutions across various industries.

FAST PRODUCTION
QUALITY MATERIALS
ON-TIME DELIVERY



www.flatpackcontainer.com.tr

ASİA PREFABRİK A.Ş

KEMALPAŞA OSB / İZMİR
TURKEY

+90553 752 11 58

Ready for the
installation video





**WORLDWIDE
SHIPPING**

PACKAGING AND INSTALLATION PHASES







Practical and economical solution through flat-pack containers

Fast transport and easy installation

Cost efficiency: High-quality production in Turkey

Custom design: Various sizes and designs available upon request

Solution for special situations: Ideal for storage or emergency accommodation with flexible applications

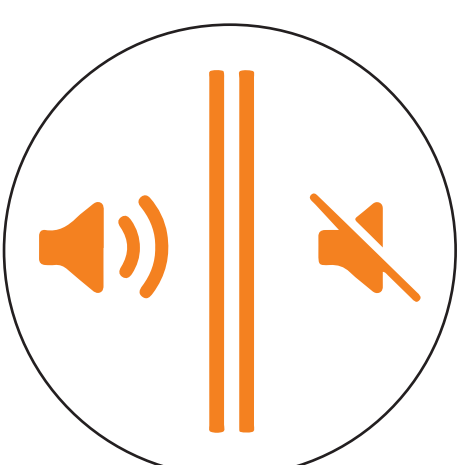
Combination of multiple containers for greater space and flexibility

WHAT SETS US APART

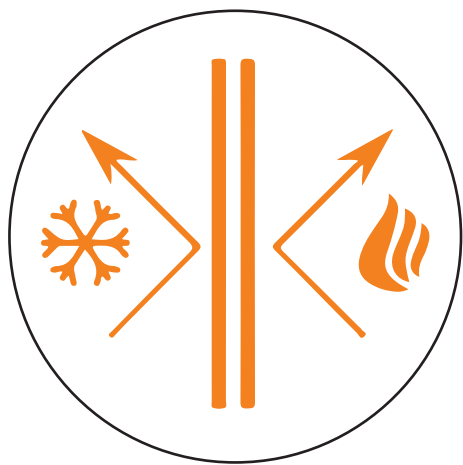
EASY AND FAST INSTALLATION



1 YEAR
WARRANTY



THERMAL AND
ACOUSTIC
INSULATION



DOUBLE
GLAZING

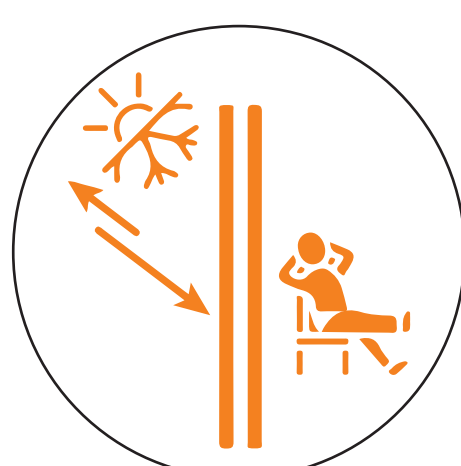
SANDWICH-PANEEL-DACH



GALVANIZED
STAINLESS
STEEL FRAME

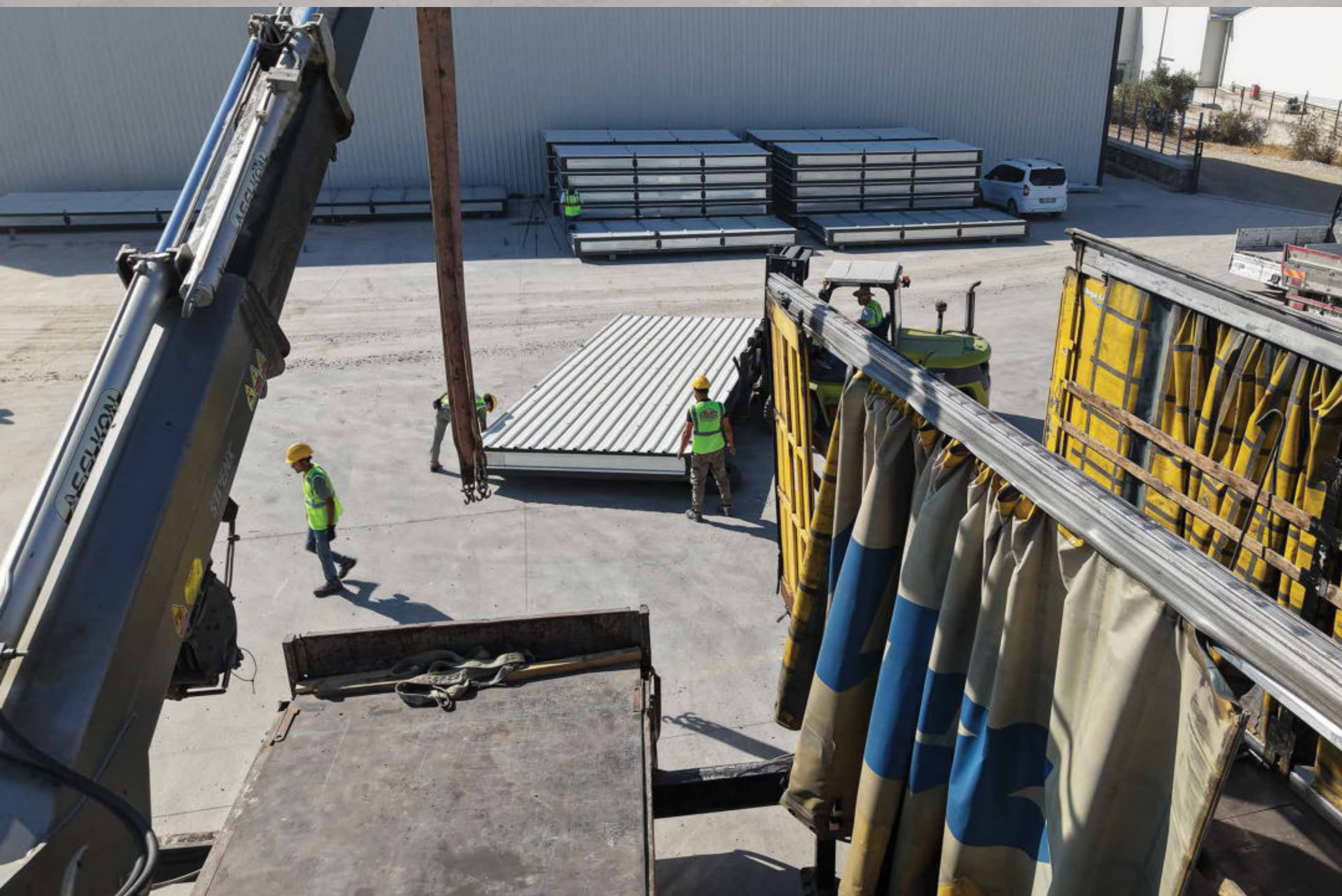


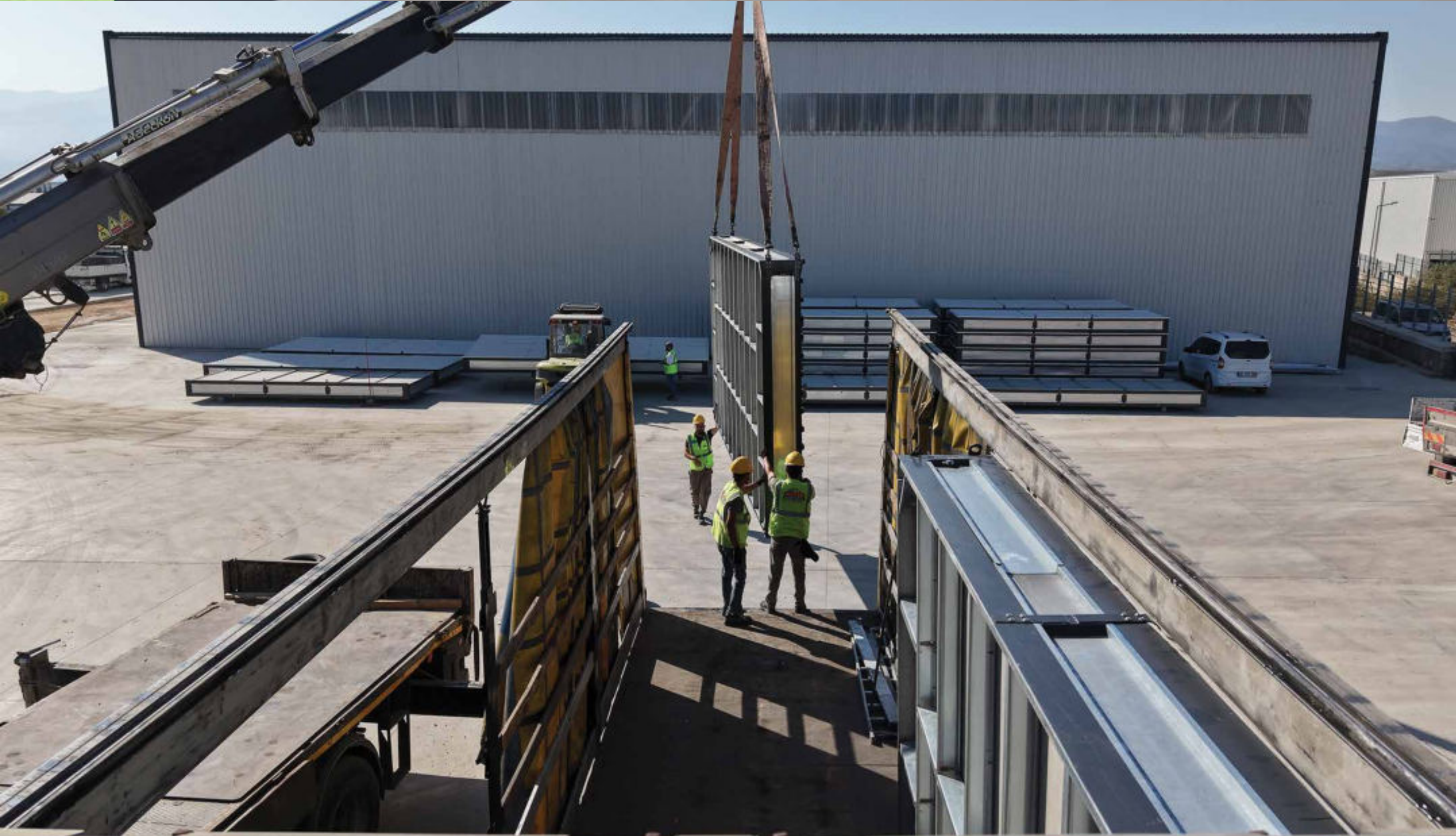
LEAK-PROOF
ROOF



HIGH
INSULATION
50 mm WALL

OPTIONS WITH POLYURETHANE,
EPS AND STONE WOOL





10 UNIT
240x600 CM
Can be transported
by truck!

or

5 UNIT
300x700 CM
+
5 UNIT
240x600 CM

COLOR OPTIONS

WHITE



ANTHRACITE



WOOD



240x600cm MC LIFE CONTAINER

MC01



MC03



MC08



300x700cm C LIFE CONTAINER

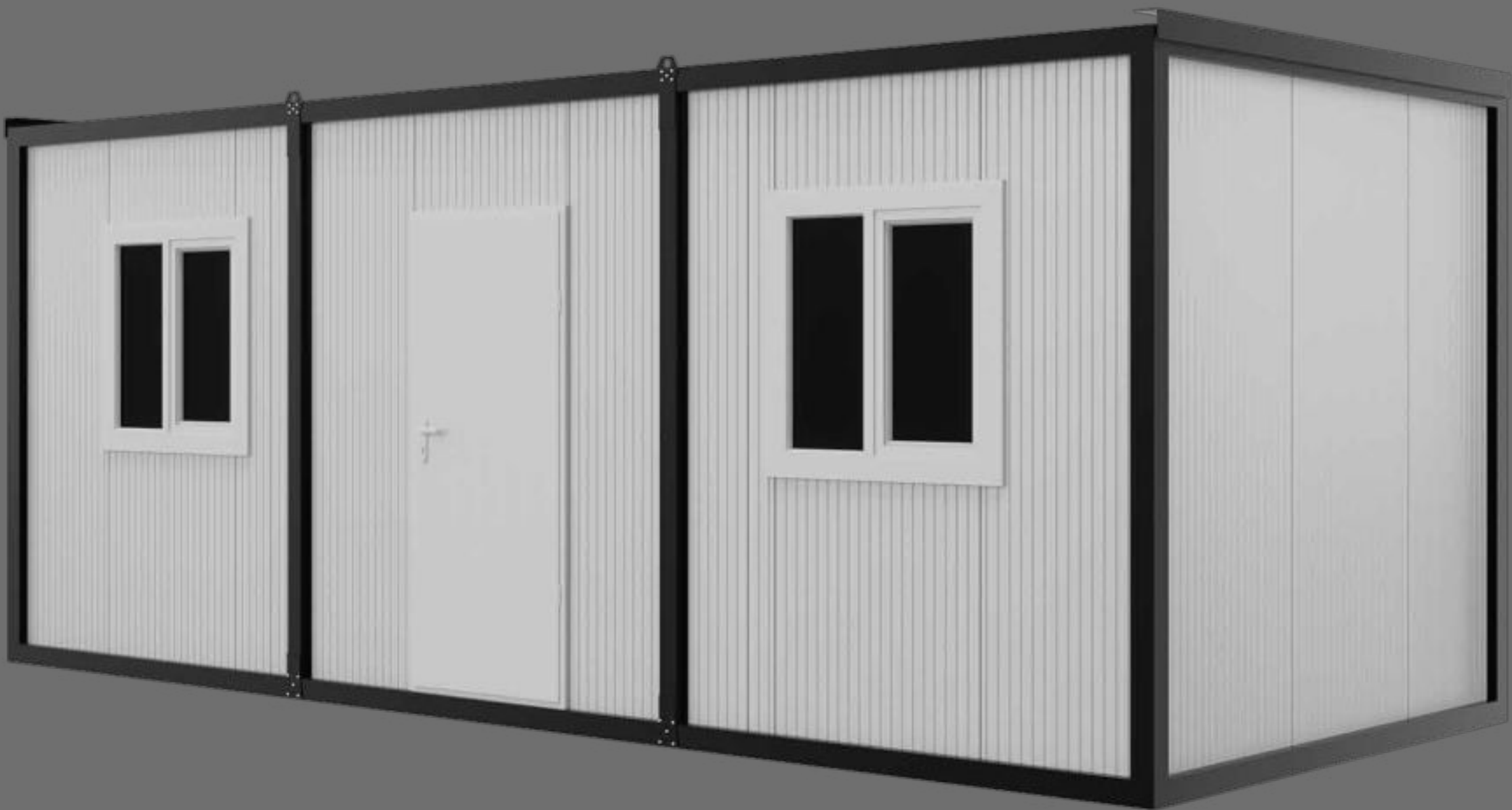
C01



C09



C13



WC – SHOWER

NC03



NC04



OFFICE – WORK AREAS



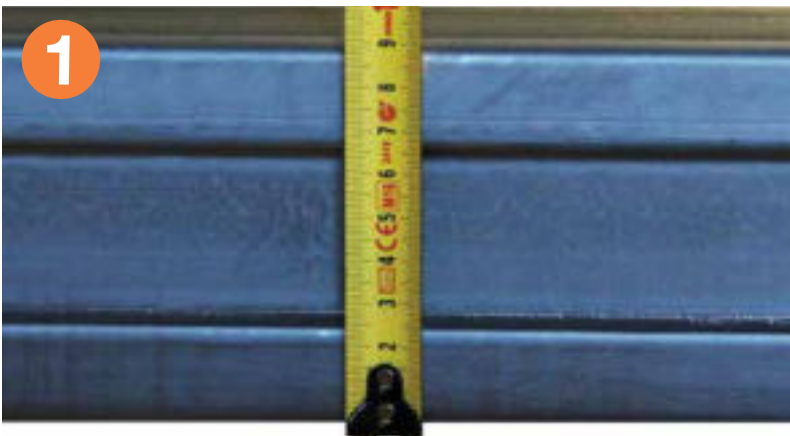
LIFE CONTAINER



CONTAINER TECHNICAL SPECIFICATIONS



RUST-PROOF GALVANIZED CHASSIS



INTERMEDIATE SUPPORT BETWEEN CEILING AND FLOOR

90 mm Galvanized Intermediate Beam
Between Ceiling and Floor



BASE CHASSIS

130 mm
Galvanized Base Chassis

FLOOR AND WALL CLADDING



FIBER CEMENT BOARD

14 mm Lower Base
Betopan Cladding



SANDWICH PANEL

50 mm
Sandwich Panel



VINYL FLOORING

2-3 mm
Vinyl Flooring

CEILING CLADDING



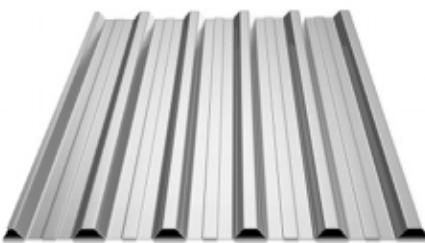
PANELING

10 mm Thick
PVC Paneling



GLASS WOOL

50 mm Thick
Glass Wool



TRAPEZOIDAL SHEET

0.5 – 0.6 mm Special
Profile Galvanized Sheet

DOORS



EXTERIOR DOOR

900 x 2000 mm,
40 mm Thick Steel Door



INTERIOR DOOR

800 x 2000 mm American
Press Panel Door



DOOR LOCK & HANDLE

Door Lock
And Door Handle

WINDOWS AND GLASS



WINDOWS

990 x 1000 mm
U-Frame PVC Window



INSULATED GLASS

4 + 12 + 4 mm
Glazed Insulating Glass



VENT

350 x 450 mm
VENT

ELECTRICAL INSTALLATION



INTERNAL GLOP

Interior Lighting



CABLES

NYM 3x1.5 – 3x2.5 mm²
(TSE – ISO) Cables



NYM CABLE

240 Volt Capacity
1034 NYM Cable



FUSE BOX

TSE-Certified 4-6-8-12
Gang Surface-Mounted
Cover Plate



SOCKET

TSE Approved
Surface Type Socket



SWITCH

TSE Approved Surface
Type Switch

PLUMBING INSTALLATION



PIPES

Used as PVC
Ø 50 and Ø 100



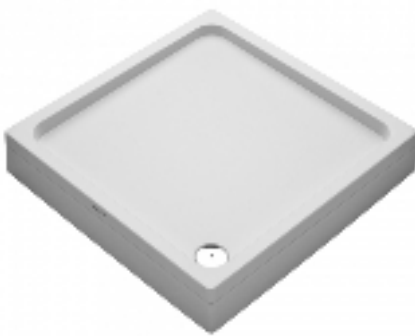
TOILET

European Style
Kale Ida Toilet Set



WASHBASIN

Ceramic
Washbasin



SHOWER TRAY

80x80 cm
Acrylic Shower Tray



FAUCETS

Bathroom Faucet
and Taps



KITCHEN CABINET

45 x 85 Base Cabinet with
Chrome Sink, Chipboard Body

STANDARD DEMOUNTABLE CONTAINER TECHNICAL SPECIFICATION				
Containers are produced in 240x600x262 cm sizes as standard.				
TECHNICAL DATA	SNOW BURDEN	50 kg/m2	EXTERIOR WALL CONDUCTIVITY (λ)	0,023 W/mK
	WIND SPEED	60 km/h	ROOF HEAT CONDUCTIVITY (λ)	0,023 W/mK
	FLOOR CHASIS CAPACITY	300 kg/m2		
CARRIER SYSTEM	BOTTOM AND TOP CHASSIS	h: 130 mm t: 3 mm DX-51 galvanized twisted profiles		
	CORNER COLUMNS	t: 3 mm DX-51 galvanized custom bend profiles		
	SUPPORT COLUMNS	t: 2 mm DX-51 galvanized custom bend profiles		
CEILING SYSTEM	EXTERIOR CLADDING	t: 0,60 mm galvanized anthracite trepeze sheet (DX-51 D 100 gr/m2)		
	CEILING SYSTEM	50 mm sandwich panel (0,35 mm RAL9002 Painted Sheet+50 mm 38 Density PUR + 0,35 mm RAL9002 Painted Sheet) (Inflammability Class B-s2;d0)		
EXTERNAL AND INTERNAL WALLS	EXTERNAL AND INTERNAL WALLS SYSTEM	h: 2400mm t:50mm sandwich panel cladding (0,35 mm RAL9002 painted sheet + 50 mm 38 density PUR + 0,35 mm RAL9002 painted sheet)(Inflammability Class B-s2;d0)		
	HEIGHT	2620 mm (Out-to-out distance under carrying lugs)		
BASE	FRAME	2 mm galvanized sheet profile with special cross-section specially drawn in Roofform machine + 50x70x2 mm DX51 galvanized SIGMA profile (37.5 cm interval)		
	COVERING	18 mm thick OSB3 (Oriented Strand Board)		
	FLOOR COVERING	2 - 3 mm thick PVC flooring matt		
DOORS	OUTER DOOR	Dimensions	1000*2000 mm	
		Door	40 mm thick sandwich panel door	
		Heat and Sound Isolation	40 mm thick PUR insulated	
	INNER DOOR	Dimensions	800*2000 mm	
		Door	American Press Panel Door	
	WC DOOR	Dimensions	700*2000 mm	
		Door	PVC Door/American Press Panel Door	
WINDOWS AND GLASS	NORMAL WINDOWS	99*100 cm PVC joinery (Double Opening) (White Color)		
	WC AND SHOWER VENTS	600mm*400mm white PVC air vent		
	NORMAL WINDOWS	4+12+4 double glazing		
PAINT	EXTERIOR PAINT	RAL 7016		
	COVERING AND CORNER POSTS	RAL 9002		
ELECTRIC WIRING	CABLE	240 Volt Capasity (VDE Certificated, 3*2,5, 3*1,5 and 2*1,5 mm² 1034 NYM)		
	SOCKETS AND SWITCHES	? Certified Surface Mounted Switches and Sockets are used		
	OUTSIDE INPUT	5x32A IP65 Certified Surface Mounted Female		
	SOCKET CABLES	NYM 3*2,5 mm2 (VDE)		
	LIGHTNING CABLES	NYM 3*1,5 mm2 (VDE)		
	FUSES AND FUSE BOX	Surface mounted fuse boxes with TSI 10, 16, 25 and 32 ampere fuses and 4 - 6 - 8 - 12 clamshell fuse boxes are used.		
	LIGHTING LUMINARIES	Normal Room	30x30 square LED	
		Wet Room	30x30 square LED	
		Outer Door Top	None	
	*NOTES	*Each wall socket is 240 W		
*Different uses (stoves, air conditioners, electrical appliances) must be specified in the project and each heater, air conditioner must be supplied with a separate fuse line.				
PLUMBING	WASH-BASIN SUPPLY PIPE	Φ20 PPRC pipe		
	DRAIN PIPE	Drain pipe	Used as Φ 50 and Φ 100 PVC.	
		Sink	28*45 cm wall mounted	
		Lavatory Faucet	Wall mounted faucet	
		Water Closet	Plastic Reservoir, Rear Outlet Toilet	
		Lavatory Lid	Closet	
		Shower Tray	80*80 Acrylic	
		Shower Faucet	Mix Bath Faucet	
		Bidet Nozzle	Wall mounted faucet	
		Kitchen Sink	45*85 chrome sink with coated chipboard cabinet	
		Water Main Line	Wash-basin supply and drain pipe main line connections are made by the EMPLOYER.	
	*All measuraments given may have a 2% margin of deviation.			
*Damages caused by settlement irregularities other than flat ground will not be covered by the warranty.				



ETHICCERT

◆ SERTİFİKA ◆



**Asia Prefabrik Mühendislik
San. ve Tic. A.Ş.**

KEMALPAŞA OSB MAH. İZMİR ANKARA YOLU 25. Km (ANSIZCA)
KÜME EVLER NO: 360 KEMALPAŞA / İZMİR / TÜRKİYE

EthicCert yukarıda adı geçen kuruluşun sistem ve süreçlerini değerlendirip,
aşağıda belirtilen standardın gereklerine uygun bulunduğunu onaylamıştır.

ISO 9001:2015

Kalite Yönetim Sistemi

KAPSAM

Banım Amaçlı Konteynerlerin, Banım Amaçlı Çok Katlı Konteynerlerin, Prefabrik Binaların, Çok Katlı Prefabrik Binaların, Çelik Konstrüksiyonların İmalatı ve Kurulumu ile Çatı, Cephe, Bölme Duvar ve Soğuk Hava Depoları Yapı Elemanı Olarak Kesintisiz Hattı Sandviç Kompozit Panel Üretimi, Nakliyesi, Perakende ve Toptan Satış, Satış Sonrası Hizmeti (Teknik Servis)

Sertifika İlk Yayın Tarihi : 09.05.2025
Sertifika Veriliş Tarihi : 09.05.2025
Sertifika Geçerlilik Tarihi : 09.05.2027
Sertifika No : ETH20250509384

İşbu belgeyle, belgelendirme kural ve koşullarının sağlandığı tasdik edilir ve süreçler, şirketimiz tarafından her zaman takip edilmektedir.



Yönetim Direktörü
EthicCert
12 Sprucewood Dr Markham, ON L3T 2P6
Canada
Phone: +1 647 786 37 32
info@ethiccert.com • www.ethiccert.com





ETHICCERT

◆ SERTİFİKA ◆



**Asia Prefabrik Mühendislik
San. ve Tic. A.Ş.**

KEMALPAŞA OSB MAH. İZMİR ANKARA YOLU 25. Km (ANSIZCA)
KÜME EVLER NO: 360 KEMALPAŞA / İZMİR / TÜRKİYE

EthicCert yukarıda adı geçen kuruluşun sistem ve süreçlerini değerlendirip,
aşağıda belirtilen standardın gereklerine uygun bulunduğunu onaylamıştır.

ISO 10002:2016

Müşteri Memnuniyeti Yönetim Sistemi

KAPSAM

Barınma Amaçlı Konteynerlerin, Barınma Amaçlı Çok Katlı Konteynerlerin, Prefabrike Binaların, Çok Katlı Prefabrike Binaların, Çelik Konstrüksiyonların İmalatı ve Kurulumu ile Çatı, Cephe, Bölme Duvar ve Soğuk Hava Depoları Yapı Elemanı Olarak Kesintisiz Hatla Sandviç Kompozit Panel Üretimi, Nakliyesi, Perakende ve Toptan Satışı, Satış Sonrası Hizmeti (Teknik Servis)

Sertifika İlk Yayın Tarihi : 09.05.2025
Sertifika Veriliş Tarihi : 09.05.2025
Sertifika Geçerlilik Tarihi : 09.05.2027
Sertifika No : ETH202505095596

İşbu belgeyle, belgelendirme kural ve koşullarının sağlandığı tasdik edilir ve süreçler, şirketimiz tarafından her zaman takip edilmektedir.



Yönetim Direktörü
EthicCert
12 Sprucewood Dr Markham ON L3T 2P6,
Canada
Phone: +1 647 786 3132
info@ethiccert.com • www.ethiccert.com





ETHICCERT

◆ SERTİFİKA ◆



**Asia Prefabrik Mühendislik
San. ve Tic. A.Ş.**

KEMALPAŞA OSB MAH. İZMİR ANKARA YOLU 25. Km (ANSIZCA)
KÜME EVLER NO: 360 KEMALPAŞA / İZMİR / TÜRKİYE

EthicCert yukarıda adı geçen kuruluşun sistem ve süreçlerini değerlendirip,
aşağıda belirtilen standardın gereklerine uygun bulunduğunu onaylamıştır.

ISO 45001:2018

İş Sağlığı ve Güvenliği Yönetim Sistemi

KAPSAM

Banım Amaçlı Konteynerlerin, Banım Amaçlı Çok Katlı Konteynerlerin, Prefabrik Binaların, Çok Katlı Prefabrik Binaların, Çelik Konstrüksiyonların İmalatı ve Kurulumu ile Çatı, Cephe, Bölme Duvar ve Soğuk Hava Depoları Yapı Elemanı Olarak Kesintisiz Hattı Sandviç Kompozit Panel Üretimi, Nakliyesi, Perakende ve Toptan Satış, Satış Sonrası Hizmeti (Teknik Servis)

Sertifika İlk Yayın Tarihi : 09.05.2025
Sertifika Veriliş Tarihi : 09.05.2025
Sertifika Geçerlilik Tarihi : 09.05.2027
Sertifika No : ETH202505094152

İşbu belgeyle, belgelendirme kural ve koşullarının sağlandığı tasdik edilir ve süreçler,
şirketimiz tarafından her zaman takip edilmektedir.



Yönetim Direktörü
EthicCert
12 Sprucewood Dr Markham, ON L3T 2P6,
Canada
Phone: +1 647 786 37 32
Info@ethiccert.com • www.ethiccert.com

